



## **XRC- 7000B / C**

High Frequency Mobile Digital C–arm System

<http://www.sco-med.de>



## Make your diagnose More accurate

- ※ High-frequency generator deliver the power you need for all the typical applications in spine surgery, orthopedics, traumatology, urology and pain management.
- ※ Unique design of large thermal capacity (>1000kJ) with advanced heat dissipation technology, allows for clear images, even for long or repeated procedures.
- ※ High-resolution CCD camera with 1K × 1K image matrix, over 4000 shades of gray, realizes more accurate diagnose.

- ※ Advanced functions of Images optimization, strengthen module, real-time displaying the clear clinical images.
- ※ Professional working station has more image post-processing functions such as the image W/L adjustment, region of interest balance, GAMMA correction, flip, noise reduction, smoothing, sharpening etc.
- ※ Two monochrome 19" flat-screen monitors clearly visualize the smallest anatomical details.

## Perfect Digital Image Chain



## Reduce the X-ray radiation to the minimum Care for operators and patients health

- ※ Short, sharp pulses for clear images and the radiation exposure for the operators and patients can be reduced to a minimum.
- ※ Motorized iris collimator with multi-leaf, supports high accuracy for selected x-ray field size.
- ※ Crosshair overlay corresponding with laser light, designed for easily checkpoint location before operation, avoiding unnecessary exposure.
- ※ Professional remote controller for exposure, allows operators retreating to X-ray exposure.
- ※ Professional storage system for single and continuous images, reducing the repeatability of the exposure.



*Intelligent control system make the operation more efficient and easier than ever before*



- ※Hand controller on C–arm stand: control the mechanical and collimator movement, improve your workflow even you are away from the unit.
- ※Hand controller on the work station trolley: select the mode of fluoroscopy.
- ※Synchronized dual touch–screen panels mounted on C–arm stand, with intuitive user interface and APR parameters setting, make the exposure control at your hand all the time.



※The wide opening and depth of the arc make for precise alignment with minimum interference with the operating area.



※Double rotatable flat–screen monitors on the trolley, clearly visualize the smallest anatomical details even at an angle.



*Four-dimensional movement mechanical design provide you the most comfortable operation environment*



motorized rotated in 360°



motorized horizontal stretch



※Four dimensional movement motorized movement for easy and accurate positioning.



motorized up and down

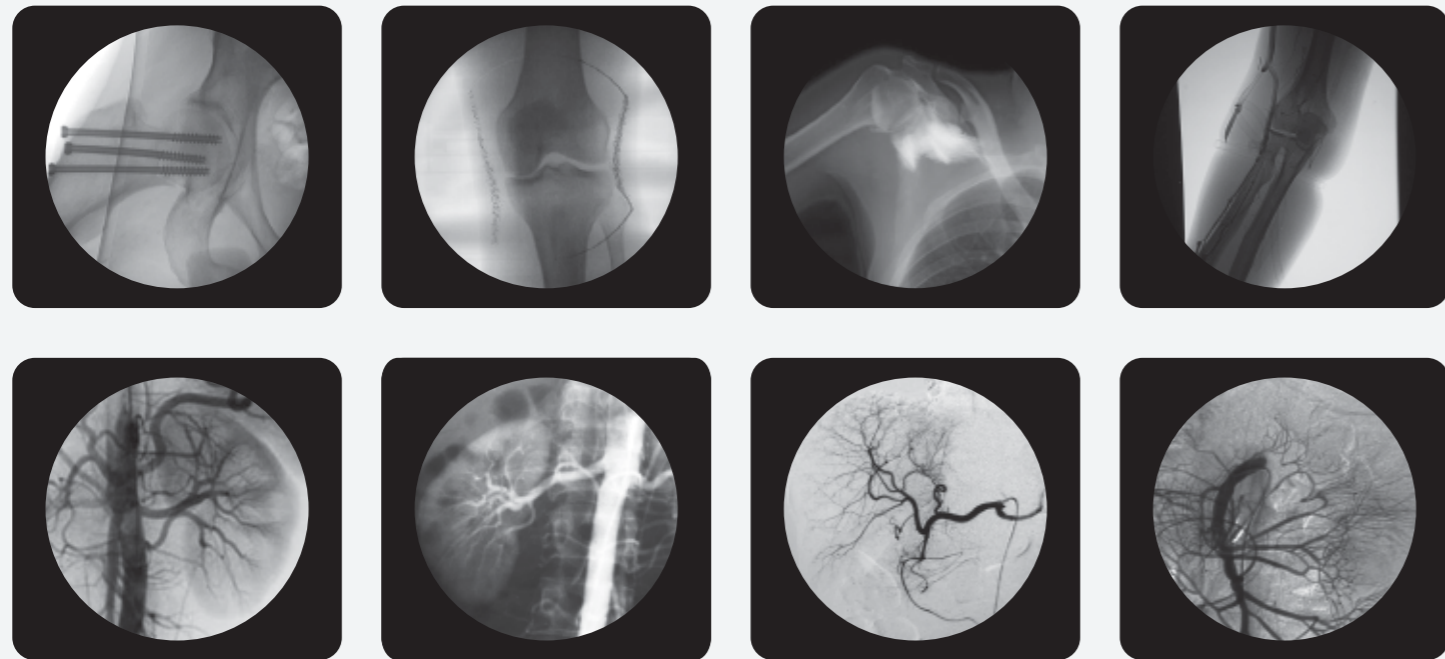


motorized slip along the orbit

*With cutting-edge technology and high performance, this system becomes a reliable partner in the OR for a vast range of surgeries.*

Professional diagnostic and treatment platform delivers the optical performance for wider application.

- ※ Pain management
- ※ Orthopedics
- ※ Urology surgery
- ※ Spinal surgery
- ※ Abdominal surgery
- ※ Digestive department
- ※ Gynecology



- ※ A high performance imaging workstation and image processing system servers you a convenient interface for integration with network.
- ※ Work-list registration for seamless integration in your hospital environment.
- ※ Dicom 3.0 network interface for integration with PACS or RIS.
- ※ CD burning for easy image transfer.

#### Technical Parameters

Item	XRC- 7000B	XRC- 7000C
High Frequency Inverter Power Supply	Output power: 12kW	Output power: 16kW
	Inverter frequency: 60kHz	Inverter frequency: 60kHz
Automatic, Manual Continuous Fluoroscopy	Tube voltage:40kV~125kV continuous adjustment	Tube voltage: 40kV~125kV continuous adjustment
	Tube current:0.3mA~4mA continuous adjustment	Tube current: 0.3mA~4mA continuous adjustment
Automatic, Manual Intensifying Fluoroscopy	Tube voltage:40kV~125kV continuous adjustment	Tube voltage: 40kV~125kV continuous adjustment
	Tube current:0.3mA~8mA continuous adjustment	Tube current: 0.3mA~8mA continuous adjustment
Automatic, Manual Pulse Fluoroscopy	Tube voltage:40kV~125kV continuous adjustment	Tube voltage: 40kV~125kV continuous adjustment
	Tube current:0.3mA~30mA continuous adjustment	Tube current: 0.3mA~30mA continuous adjustment
	Pulse frequency:0.1~10 frame/s continuous adjustment	Pulse frequency: 0.1~10 frame/s continuous adjustment
DSI Digital Spot Film	0.1~10 frame/s can be chosen freely	0.1~10 frame/s can be chosen freely
Radiography Tube Voltage, mA	40kV~125kV 160mA	40kV~125kV 200mA
X-ray Tube Special For High Frequency	Rotary anode focus: 0.3/0.6	Rotary anode focus: 0.3/0.6
	Anode thermal capacity: 212kJ	Anode thermal capacity: 212kJ

