

Portable Color Ultrasound Scanner

Model: US-516



Main Feature

- Comprehensive Clinic Application
- Windows XP System, Color Doppler, Power Doppler;
- Laptop design, compact and stylish
- 15" High Resolution LED monitor, premium image resolution
- High density 128 Elements Probe
- User preset function
- Abundant diagnostic software packages, satisfying different clinical requirement
- Various peripheral ports, flexible expansion solutions

Technical Parameter

Imaging Modes:

- B, B|B, 4B, B|M, M
- Color Doppler (CFM)
- Power Doppler (PDI)
- Directional Power Doppler (DPDI)
- Pulsed Wave Doppler (PWD)
- Continuous Wave (CW)
- B+PWD (Duplex)
- B+CFM/PDI/DPDI+PWD (Triplex)
- High Pulse Repetition Frequency (HPRF)
- Tissue Harmonic Imaging (THI)
- Compound
- Trapezoid

Scanning Method:

Electronic linear, electronic convex, electronic microconvex, electronic phased array; scanning depth: 2-750px

Color Doppler:

- PRF variable: 0.5-9 kHz 0.5-15KHz
- wall filter settings: 3 steps (5%, 10%, 15% PRF)
- angle steering for linear transducers: $\pm 10^\circ \pm 30^\circ$
- real-time spatial filter: 4 values
- CFM palette > 10 maps
- PDI palette > 10 maps
- B/Color priority control
- color threshold control
- CFM baseline control
- Doppler frequency selection
- color frame averaging
- Transparent Color Mapping (TCM)

Pulsed Wave Doppler:

- PRF variable: 1-10 kHz 0.5-15KHz
- wall filter settings: 16 steps (2.5%-20% PRF)
- angle steering for linear transducers: $\pm 10^\circ \pm 30^\circ$
- real-time trace line with automatic calculation of spectrum parameters
- stereo sound: volume control
- PWD palette > 10 maps
- Doppler frequency selection

Processing:

- High Line Density scan mode for better resolution
- 8 sliders TGC Control
- dynamic range > 120 dB
- overall gain control
- M - mode sweep speed control
- acoustic power control
- variable frame averaging
- brightness, contrast
- advanced gamma control
- scan direction, rotation, up-down controls
- negative / positive control
- echo enhancement control
- noise rejection function
- speckle reduction

Image and video:

AVI, JPG, BMP, PNG, TIF, DCM (DICOM)

General Measurements and Calculations:

Distance, Length, Area, Circumference, Volume, Angle, Stenosis %, A/B Ratio, Velocity, Pressure Gradient (PG), Acceleration, Resistivity Index (RI), Heart Rate, Velocity Time Integral (VTI), etc.

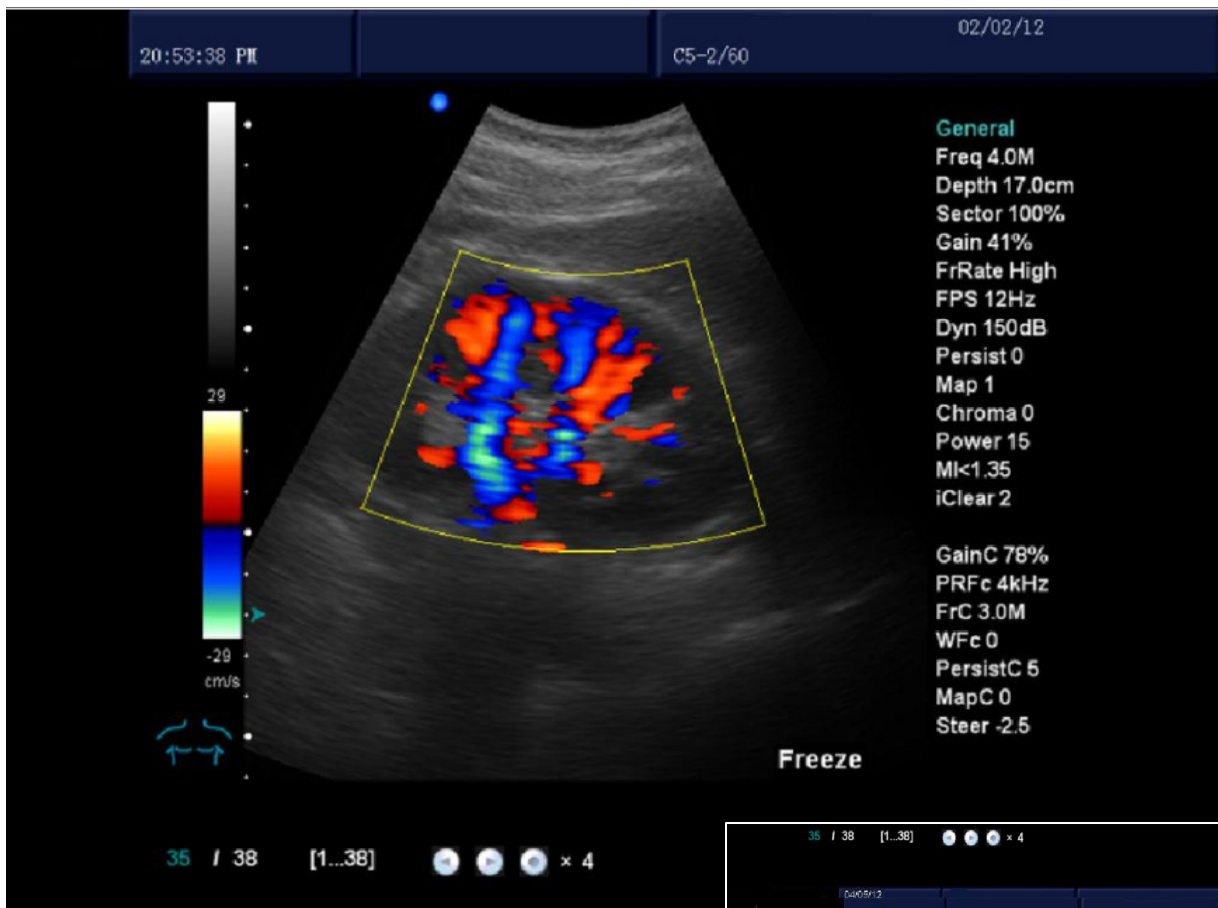
Measurements and Calculations Software Packages:

Obstetrics, Gynecology, Abdominal, Urology, Endocrinology, Vascular, Cardiology, etc.

Optional 3D Module.

Expansion interfaces:

- VGA, TV Interface
- USB2.0 Interface
- RJ-45 Network interface
- Support DeskJet printer, LaserJet printer, video printer



Wide Selection of accessories : optional, pls. ask

SCO Engineering GmbH
Auf der Heide 15 | D- 37351 Dingelstädt
Federal Republic of Germany
Phone +49 (36075) 439-339 | Fax : -308
E:sco@sco-engineering.com
www.sco-engineering.com

