

## Fully Automatic Urinalysis System

### UA -1500 Specifications

Parameter	Glucose, Protein, Blood, Bilirubin, pH, Ketone, Ascorbic Acid, Urobilinogen, Nitrite, Leucocytes, Special Gravity, Creatinine, Microalbumin, MA/CR, Color
Principle	dual-wavelength reflectance photometry
Measuring Wavelength	4 Wavelengths (525,620,720, 470nm)
Strip Reaction Time	60seconds
Throughput	225 samples / hour
Test mode	Continue loader mode, Manual mode STAT mode
Memory Capacity	300,000 results
Strip type	URIT 11F, URIT 12F
Strip Capacity	200strips
Required Urine Volume	2ml(Qnline minimum volume: 3ml non-centrifugalurine)
Batch size	100 samples, 10 samplesx10 racks 50 samples connect with URIT-1200
Display	Large touch screen
Printer	Built-in thermal printer, external printer

### UA -1200 Specifications

Parameters	Auto-particle recognition: RBC, WBC, SQEP ( squamous epithelial cells ), NSE ( non-squamous epithelial cells ), UNCC(uncategorized cast),casts, mucus, crystals, bacteria, yeast, and etc.
Principles of operation	Auto microscopic Measurement with flat flow cell
Counting cell	double channels, thickness of inner chamber: 0.1 mm
Throughput	Up to 60 samples / hour Three types test mode: fast, standard, refined
Test mode	Auto loader mode, STAT mode
Bar code	internal auto bar code reader
Sample	native urine samples or urine sediment samples
Sample volume	Minimum volume: 2.5 ml non-centrifugal urine Aspiration Volume: 1 ml
Batch size	50 samples, 10 samplesx5 racks
Memory Capacity	more than 50,000 results (include images)
Connection	receive URITseries urine analyzer test data Available for connect URIT-1500 Automatic Urine Analyzer
Interfaces	USB, RS232 SERIAL PORT, parallel interface, LAN port

A+A Diagnostics

[www.aa-diagnostics.de](http://www.aa-diagnostics.de)



ISO9001  
ISO13485

Rev: 201202-3 (20120000)

Global Diagnostics Supplier



## Fully Automatic Urinalysis System

Fully Automatic Urinalysis consists of dry chemistry and sediment analysis

Flow cell technology, without centrifuge and dye

Easy maintenance module design

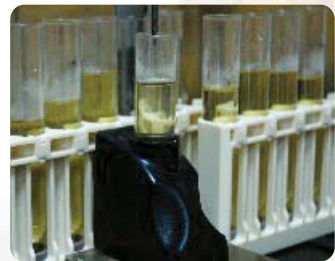


A+A Diagnostics

## UA -1500 Automated Urine Analyzer



- Intelligent operation system
- Automatic sampling and waste strips discarding system
- Emergency inserting function to conduct the single emergency test
- Accurate quantitative sampling system to avoid cross contamination
- Large LCD touch screen
- Integrated barcode reader and RS232 interface convenience for LIS and HIS system



STAT Rack

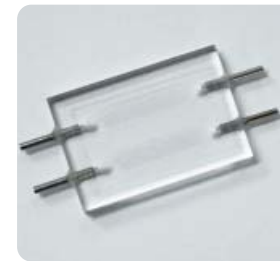


URINE CONTROL



## UA -1200 Auto Urine Sediment Analyzer

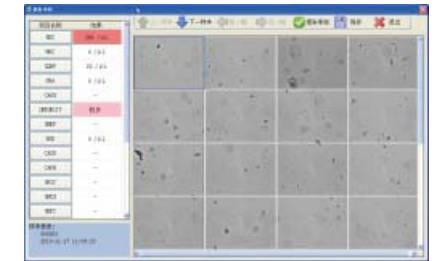
- Double counting channels in flow cell
- Whole viewfield microscopic images of sediment
- Automatic identification and classification of urine particles
- Walk-away automation, high efficient washing system
- High-efficiency washing system, automatic flow cell and probe washing



Double counting flow cell



Auto Microscope technology



Intelligent operation system